

# MONTHLY MEMBERSHIP PROGRESS REPORT

LOCATION MINNESOTA

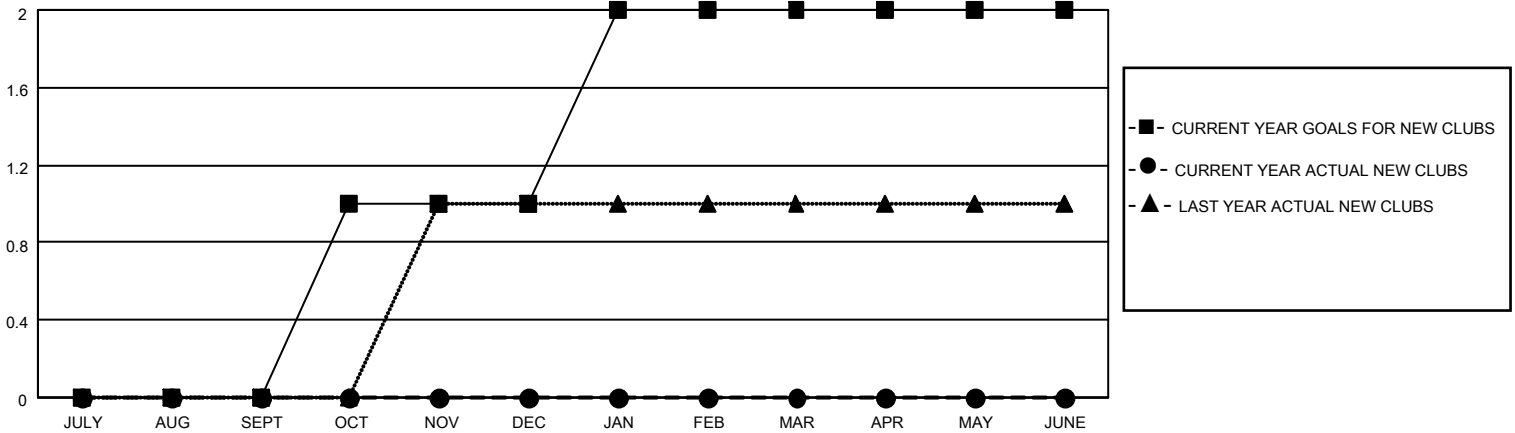
District 5M 2

Results as of: 4/30/2022

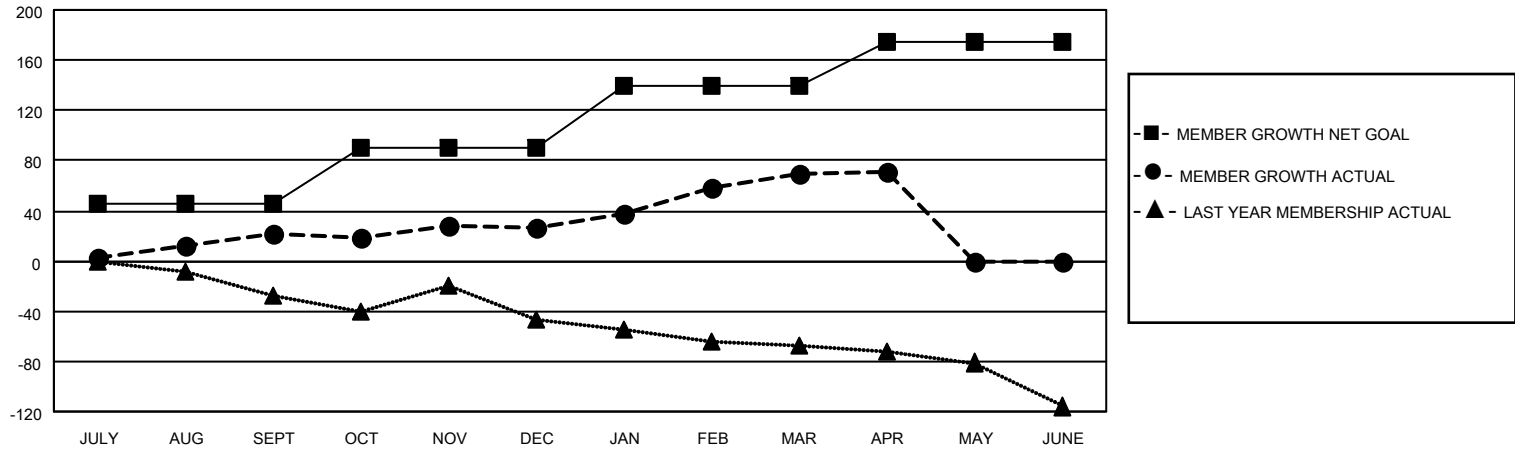
Clubs			
RESULTS FOR 2021-2022			
QUARTER	NEW CLUB GOAL	NEW CLUBS	DROPPED CLUBS
JULY/AUG/SEPT	0	0	0
OCT/NOV/DEC	1	0	0
JAN/FEB/MAR	1	0	1
APR/MAY/JUNE	0	0	0

Members			
RESULTS FOR 2021-2022			
QUARTER	MEMBER GROWTH NET GOAL	MEMBER GROWTH ACTUAL	DROPPED MEMBERS ACTUAL (including transfers)
JULY/AUG/SEPT	45	68	44
OCT/NOV/DEC	45	64	57
JAN/FEB/MAR	50	75	28
APR/MAY/JUNE	35	10	8

**GOALS AND ACTUAL NEW CLUBS CUMULATIVE**



**GOALS AND ACTUAL MEMBERS CUMULATIVE**



**DROPPED CLUBS: 1**

**45 CLUBS OF 66 ADDED 1 OR MORE NEW MEMBERS**

**GENDER DISTRIBUTION**

MALE	1,495 (65.77%)
FEMALE	778 (34.23%)
NON BINARY	0 (0.00%)
PREFER NOT TO ANSWER	0 (0.00%)

**DROPPED MEMBERS**

[CLICK HERE FOR CUMULATIVE MEMBERSHIP DATA](#)

DECEASED	24
CLUB CANCELLED	0
OTHER	113
<b>TOTAL</b>	<b>137</b>

TOTAL FAMILY UNIT MEMBERS 378

FAMILY MEMBERS PAYING HALF DUES 194